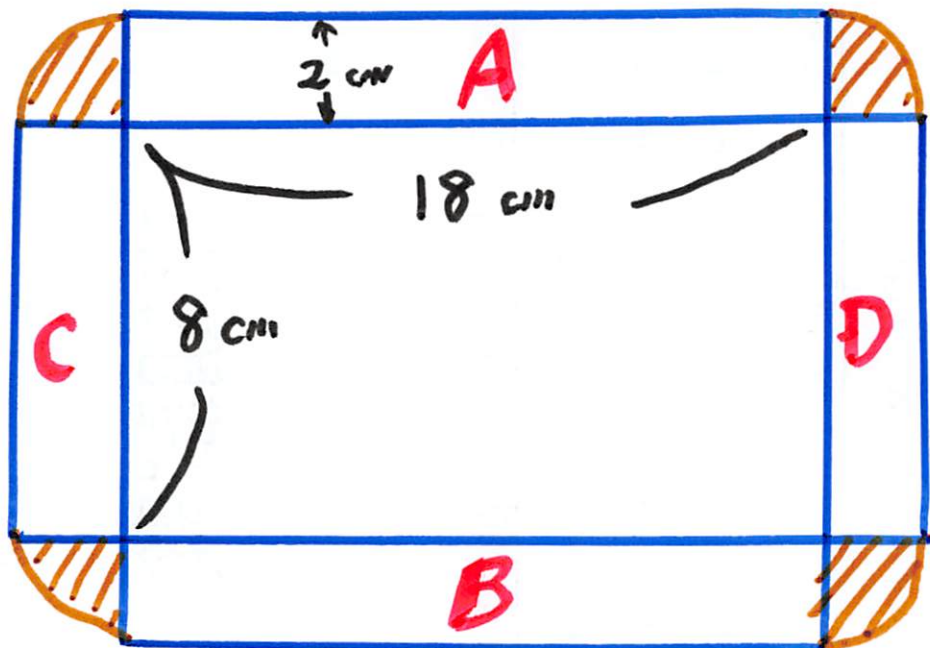


H13 Z 4/7

外側

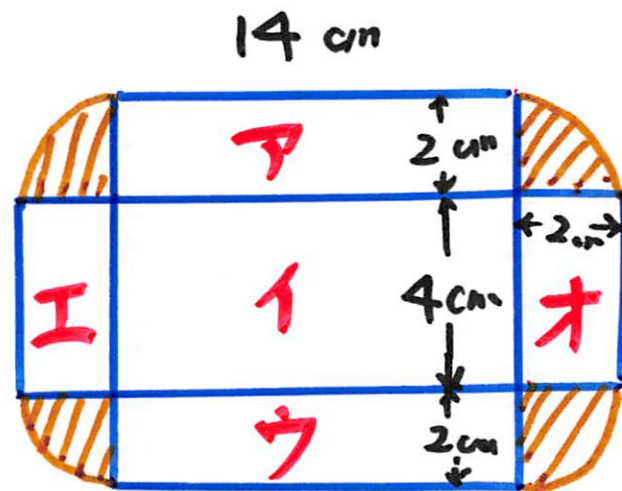


$$A+B = 2 \times 18 \times 2 = 72$$

$$C+D = 2 \times 8 \times 2 = 32$$

$$A+B+C+D = 104$$

内側



$$ア+イ+ウ = 14 \times 8 = 112$$

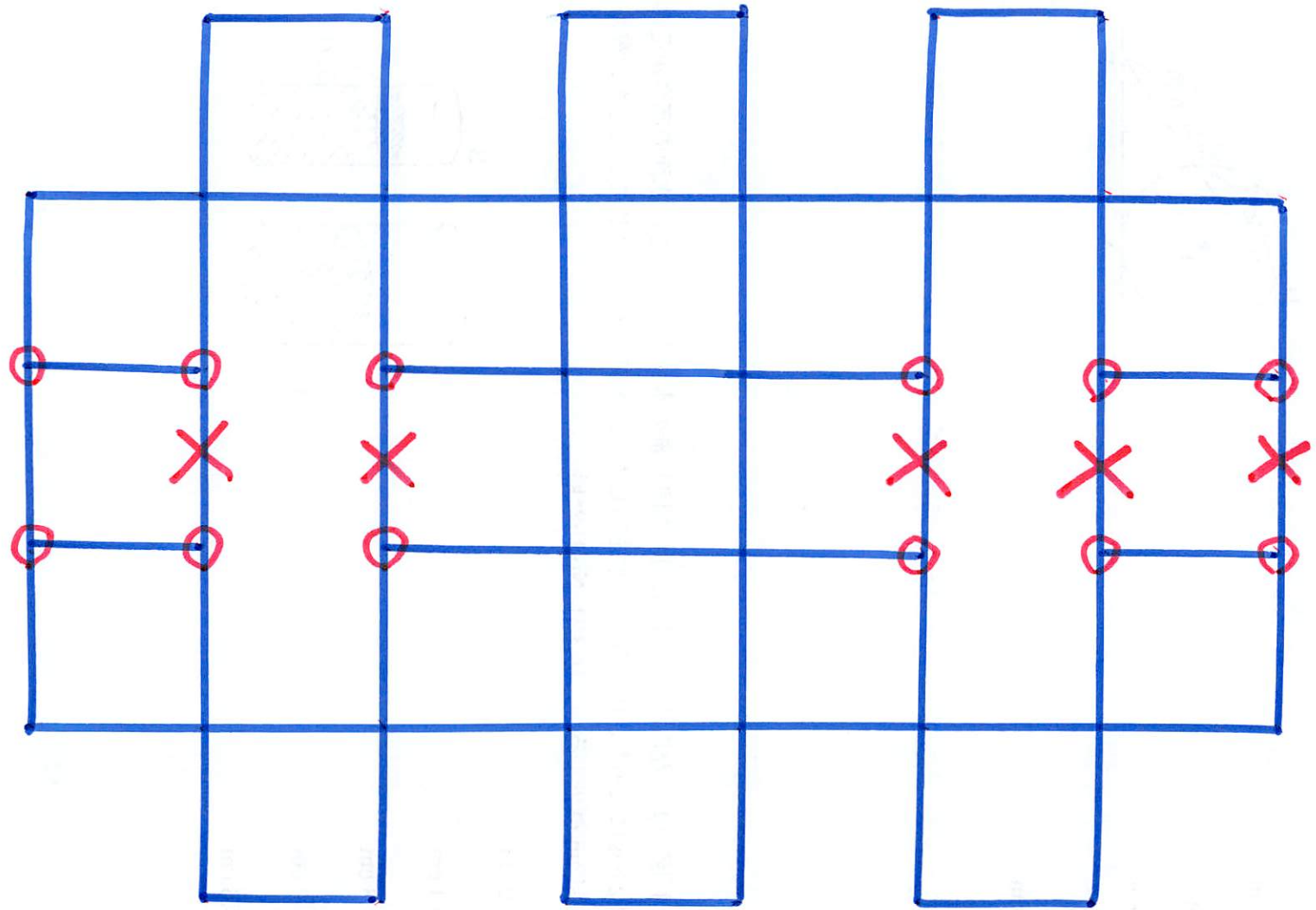
$$イ+オ = 2 \times 4 \times 2 = 16$$

$$ア \sim オ = 128$$

$$\therefore \text{差は } 128 - 104 = \underline{\underline{24 \text{ cm}^2}}$$

H13 5 48%

交点奇数 12 处所 \Rightarrow 2



HB 6

44/6



A

	1	1	1	1	*	
1	2	8		2	8	
1	3	3	3	5		
1	4	7	10	15	1	1
				P		
				1	2	3
				1	3	6

$$15 \times 6 = \underline{\underline{90}}$$

B

H13 7

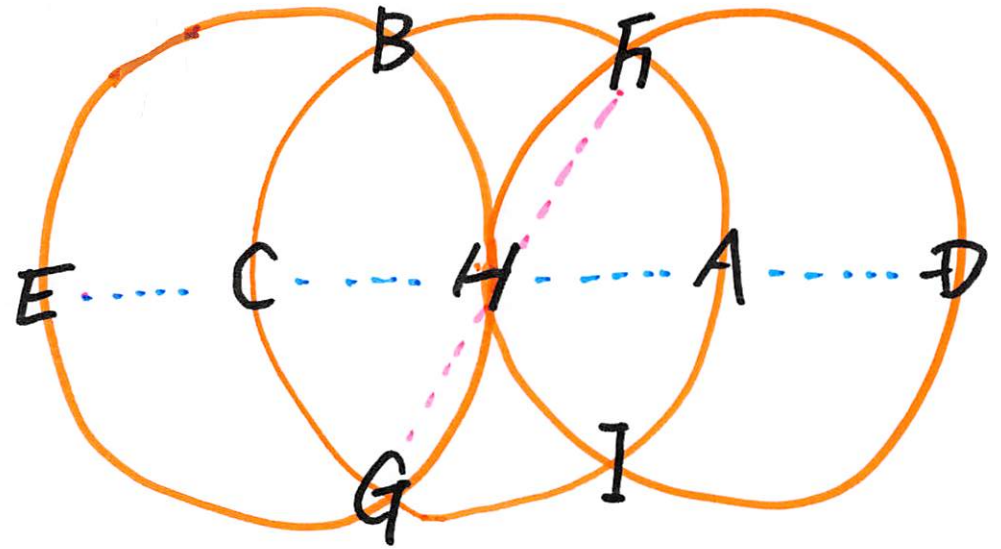
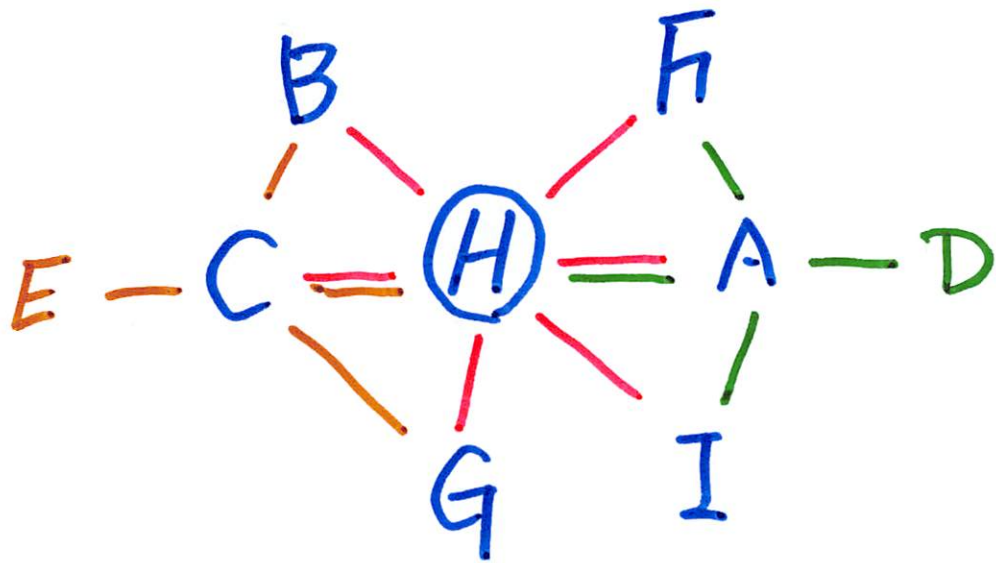
4/1/1

共通の院を中心に

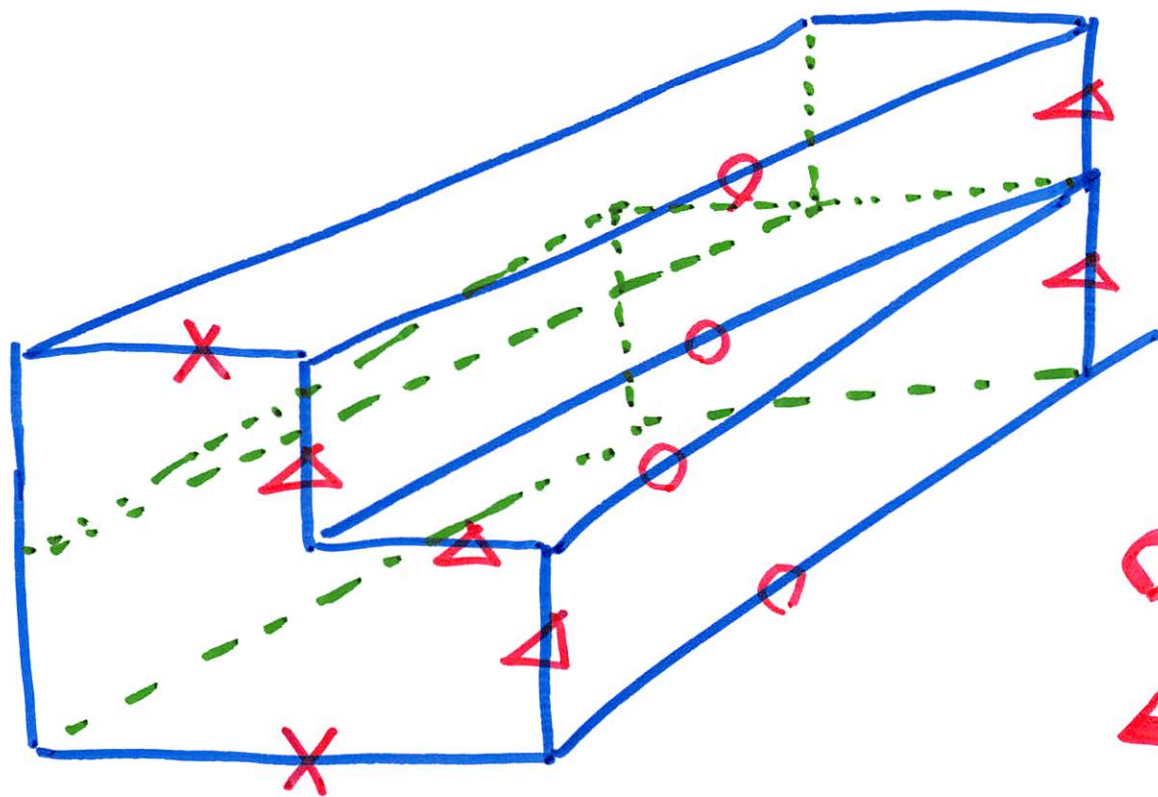
イ:

ア:

ウ:



H13 13 26%



反對側
相同

$$\begin{aligned} \circ & 4 \times 2 = 8 \\ \Delta & 5 \times 2 = 10 \\ \times & 2 \times 2 = 4 \end{aligned}$$

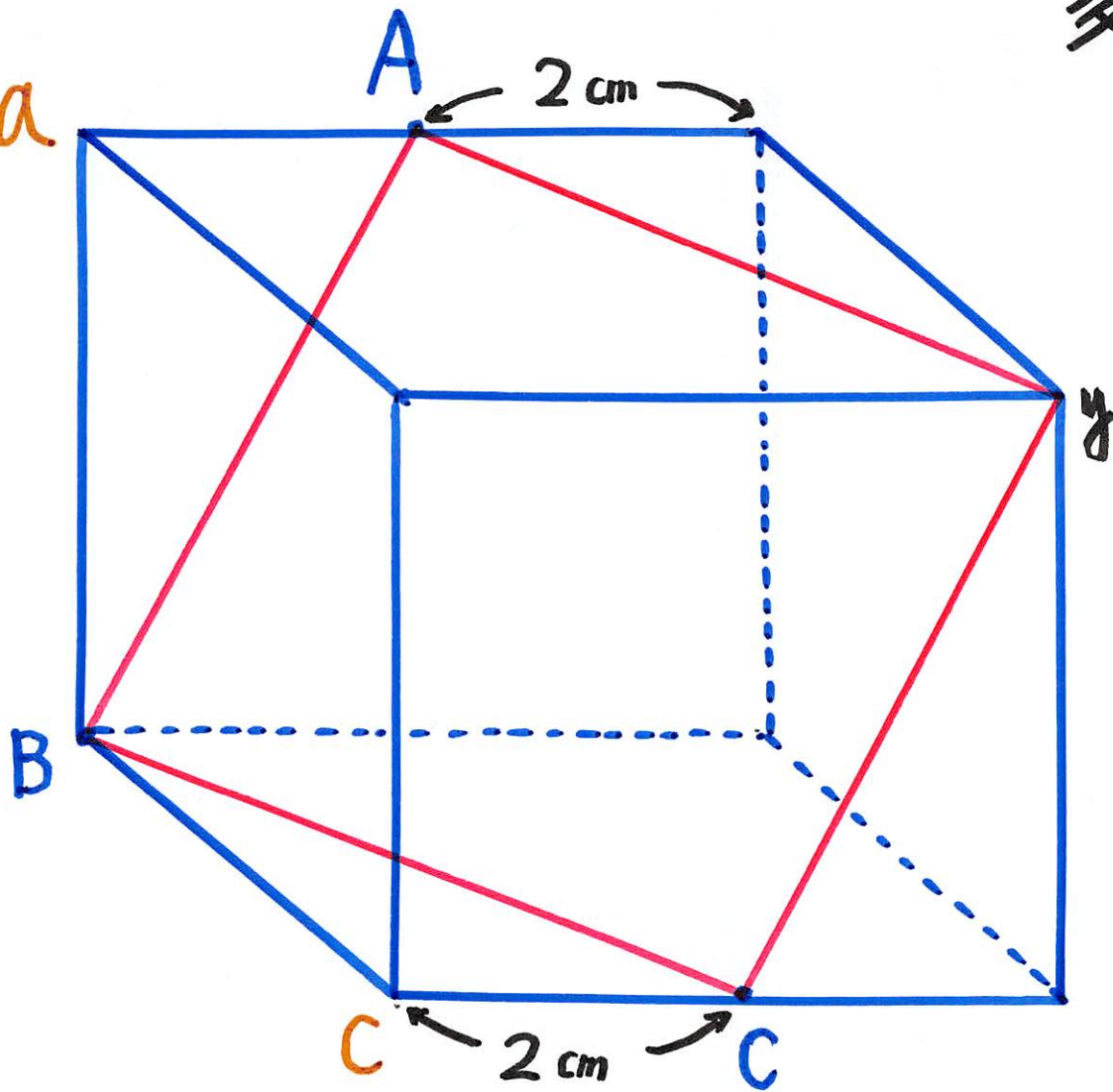
22

$S/2 = 7$

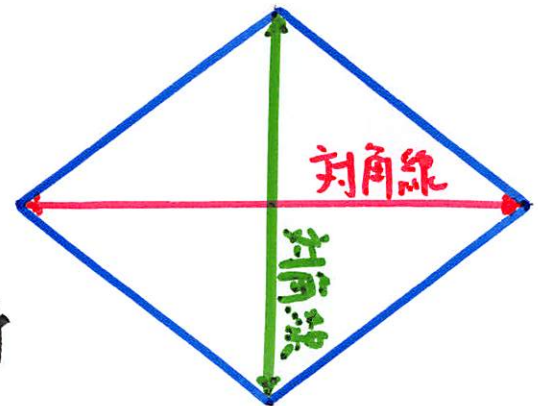
34%

$13/14 = 54\%$

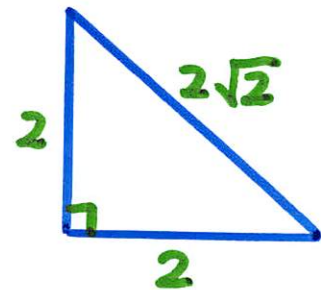
a



菱形の面積



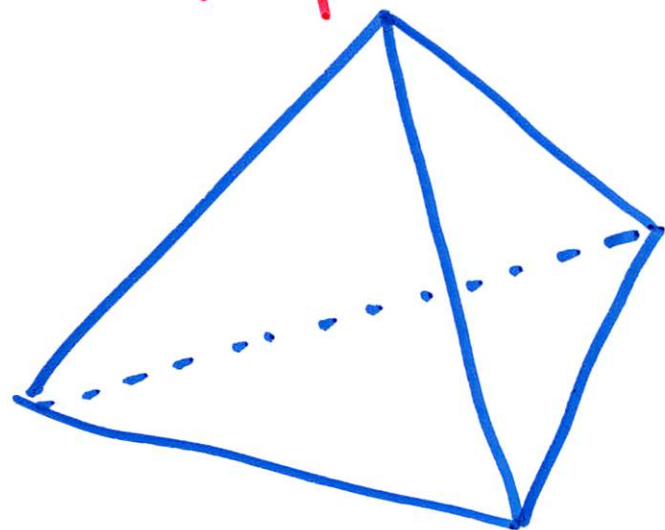
対角線 \times 対角線 $\div 2$



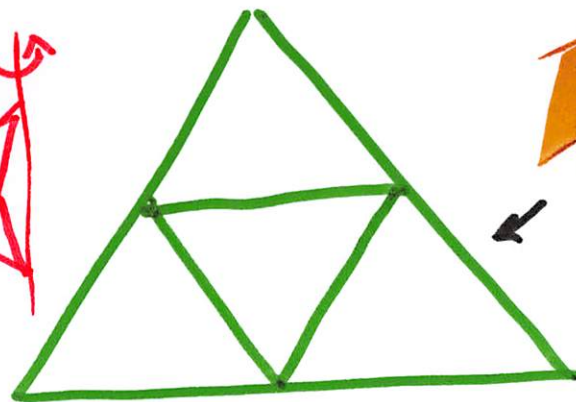
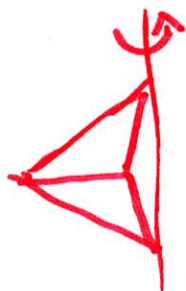
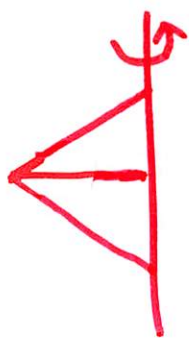
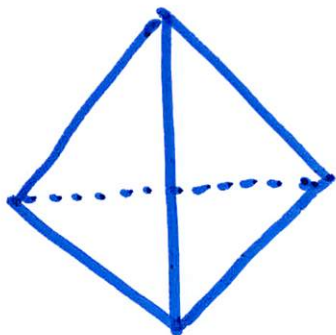
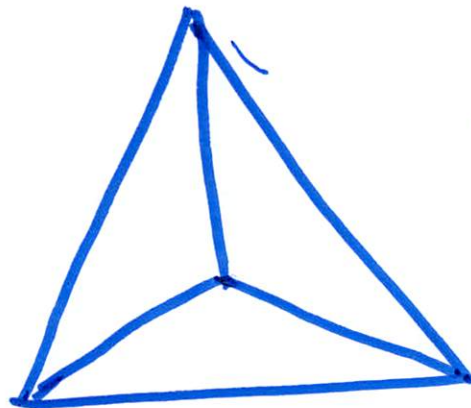
H/B 15 30%

正四面体: 正三角形×4

斜か



上か



展開図

